



2007 Toyota Tundra 3pc Bumper

After

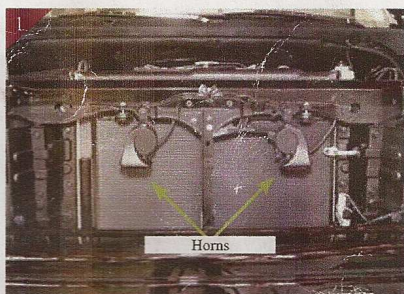
Shown with optional Upper Machined Grille Part#43752

PART# 43741 (Brushed) 43742 - (Polished) 43743 - (Black) 3pc Bumper



Hardware

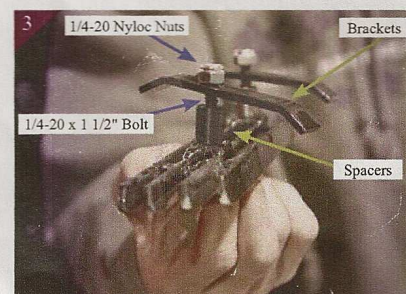
- 6 - Spacers
- 6 - Brackets
- 6 - 1/4-20 x 1 1/2" Bolts
- 6 - 1/4-20 Nyloc Nuts



Open hood and locate the horns shown above.



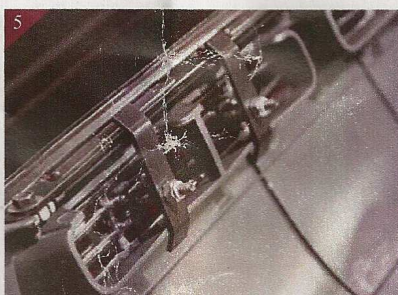
Remove both horns by unclipping the wiring harness and then remove the stock bolt holding in place. This will allow you more room to work.



Start by placing supplied 1/4-20 x 1 1/2" bolt thru mounting tab in billet grille. Then place the supplied spacers on bolts, followed by the brackets & 1/4-20 nyloc nuts. Repeat process for all remaining billet grilles.



Rotate the brackets sideways and place billet grille into opening and center. Reaching on the backside of the bumper rotate the brackets around so that they catch the top of metal rail and bottom of plastic bumper opening as shown.



Tighten bolts using an allen wrench and ratchet to fasten.



Repeat for remaining grilles.

Completed Installation

For installation of billet grilles that require cutting of the stock shell, proper tools, knowledge and skill are needed. Carriage Works is not responsible for care & accuracy of the installation, only for Fit & Finish of its products. Use a qualified installer or contact original vendor for references to complete all instructions.

NOTE: Please adjust horizontal blades if irregular. This is the result of shipping and handling outside of Carriage Works control. Also Carriage Works Recommends applying a high quality automotive wax to maintain the original appearance.

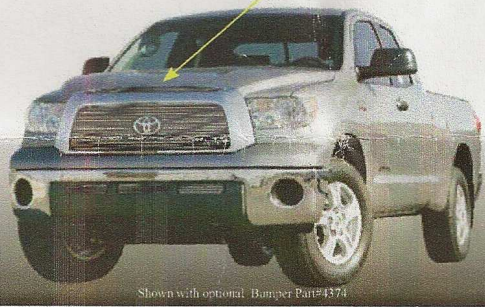


2007 Toyota Tundra

Machined Upper

After

Shown with optional Upper Machined Grille Part#43752



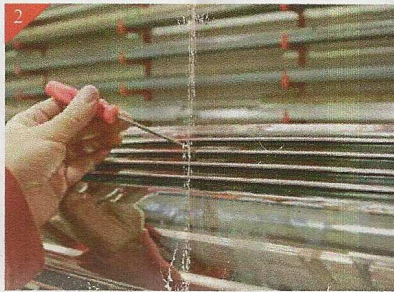
PART# 43751 (Brushed) 43752 - (Polished) 43753 - (Black) Machined Pc.

Hardware

- 4 - 10-32 Well Nuts
- 4 - 10-32 x 5/8" SS Black Bolts



Remove the plastic rock guard from top of stock shell. Do so by unclipping at one end and working to the other.



Place machined billet grille into opening and center. Make sure and check for alignment all the way around. Tape the machined grille in place using masking tape, so that it doesn't move during marking of the holes. Next mark hole locations using a scribe while using the machined piece as a guide to mark holes.



Remove machined grille and drill the just marked hole locations. Drill using a 3/16" drill bit as a pilot hole then move to a 3/8" drill bit and drill again as shown. Repeat process for remaining attachment holes.



Place the supplied rubber well nuts in just drilled locations as shown. Push in place so that the top portion seats against hood as shown (Fig B).



Place the machined grille into opening and center attach using the supplied 10-32 x 5/8" Stainless Steel bolts as shown without over tightening.

Completed Installation

For installation of billet grilles that require cutting of the stock shell, proper tools, knowledge and skill are needed. Carriage Works is not responsible for care & accuracy of the installation, only for Fit & Finish of its products. Use a qualified installer or contact original vendor for references to complete all instructions.

NOTE: Please adjust horizontal blades if irregular. This is the result of shipping and handling outside of Carriage Works control. Also Carriage Works Recommends applying a high quality automotive wax to maintain the original appearance.



2007 Toyota Tundra Bolt Over

After

PART# 43851 (Brushed) 43852 - (Polished) 43853 - (Black) Upper

Shown with optional Upper Machined Grille Part#43752



Shown with optional Bumper Part#4374

Hardware

4 - Toggle Bolt Assemblies

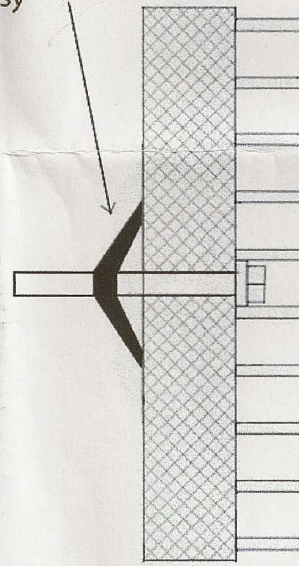


Place billet grille into opening and center. Attach billet grille by using the supplied Toggle bolt assemblies. Place bolt thru mounting tabs in billet grille then attach wing portion of toggle on bolt and tighten, without over tightening. (See Diagram)

Diagram

Toggle Bolt Assy

Billet Grille



Factory Grille

Completed Installation

For installation of billet grilles that require cutting of the stock shell, proper tools, knowledge and skill are needed. Carriage Works is not responsible for care & accuracy of the installation, only for Fit & Finish of its products. Use a qualified installer or contact original vendor for references to complete all instructions.

NOTE: Please adjust horizontal blades if irregular. This is the result of shipping and handling outside of Carriage Works control. Also Carriage Works Recommends applying a high quality automotive wax to maintain the original appearance.